

Human LTBR Protein

Cat. No. LTB-HM201

Description

| | |
|-------------------------|--|
| Source | Recombinant Human LTBR Protein is expressed from HEK293 with hFc tag at the C-Terminus. It contains Gln31-Met227. |
| Accession | P36941-1 |
| Molecular Weight | The protein has a predicted MW of 48.5 kDa. Due to glycosylation, the protein migrates to 60-70 kDa based on Tris-Bis PAGE result. |
| Endotoxin | Less than 1EU per µg by the LAL method. |
| Purity | > 95% as determined by Tris-Bis PAGE > 95% as determined by HPLC |

Formulation and Storage

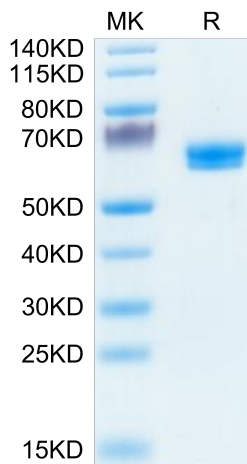
| | |
|-----------------------|--|
| Formulation | Lyophilized from 0.22µm filtered solution in PBS (pH 7.4). Normally 8% trehalose is added as protectant before lyophilization. |
| Reconstitution | Centrifuge the tube before opening. Reconstituting to a concentration more than 100 µg/ml is recommended. Dissolve the lyophilized protein in distilled water. |
| Storage | -20 to -80°C for 24 months as supplied from date of receipt. -80°C for 3-6 months after reconstitution. 2-8°C for 2-7 days after reconstitution. Recommend to aliquot the protein into smaller quantities for optimal storage. Please minimize freeze-thaw cycles. |

Background

Components of lymphotoxin beta receptor (LTBR)-associated signaling complexes, including TRAF2, TRAF3, NIK, IKK1, and IKK2 have been shown to participate in the coupling of LTBR to NFkappaB. TRAF3 functions as a negative regulator of LTBR signaling via both canonical and non-canonical NFkappaB pathways by two distinct mechanisms. These effects of TRAF3 depletion did not require LTBR signaling and were consistent with autonomous activation of the non-canonical NFkappaB pathway.

Assay Data

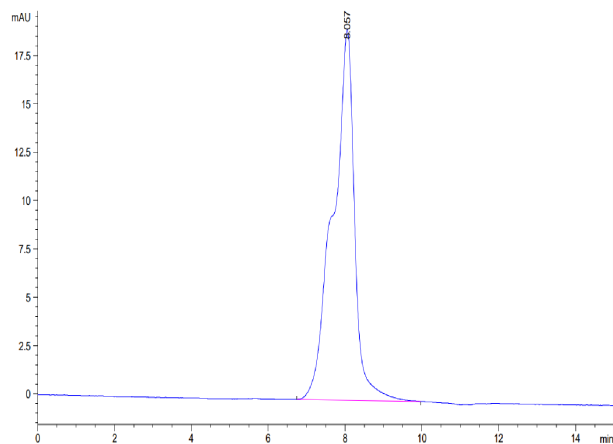
Tris-Bis PAGE



Human LTBR on Tris-Bis PAGE under reduced condition. The purity is greater than 95%.

SEC-HPLC

Assay Data



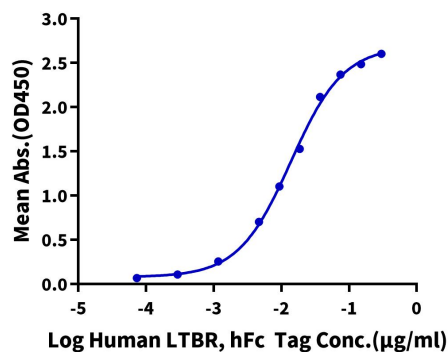
The purity of Human LTBR is greater than 95% as determined by SEC-HPLC.

Assay Data

ELISA Data

Human LTBR, hFc Tag ELISA

0.1µg Human LIGHT, His Tag Per Well

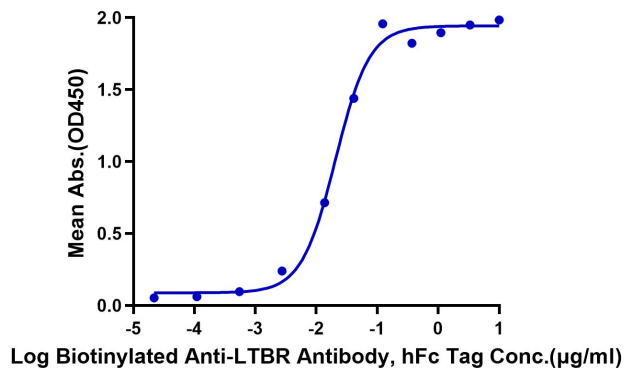


Immobilized Human LIGHT, His Tag at 1µg/ml (100µl/Well) on the plate. Dose response curve for Human LTBR, hFc Tag with the EC50 13.8ng/ml determined by ELISA (QC Test).

ELISA Data

Human LTBR, hFc Tag ELISA

0.05µg Human LTBR, hFc Tag Per Well



Immobilized Human LTBR, hFc Tag at 0.5µg/ml (100µl/Well) on the plate. Dose response curve for Biotinylated Anti-LTBR Antibody, hFc Tag with the EC50 20.7ng/ml determined by ELISA.